

Celebrating Our 11<sup>th</sup> Anniversary

WIN A STAY  
AT ATLANTIS THE PALM, DUBAI

# TRAVEL + LEISURE

INDIA  
& SOUTH ASIA

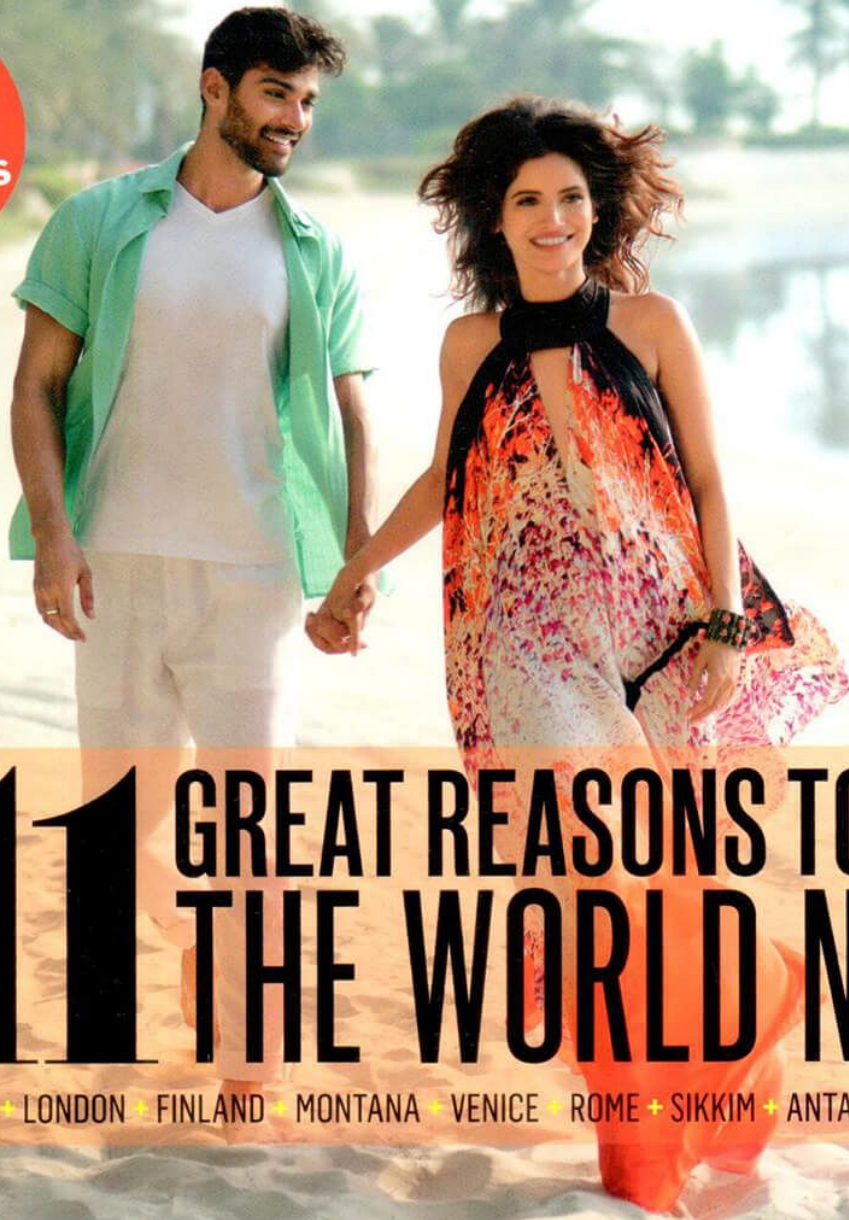
travelandleisureindia  
SEPTEMBER 2017 / ₹ 1

ISSN 2455-3409



9 772455 340801  
S 4.50 / SLR 450 / N  
35 / MVR 60  
PKR 300 / BTN 200  
TAKA 350

100+  
LATEST  
TRAVEL  
ESSENTIALS  
INSIDE

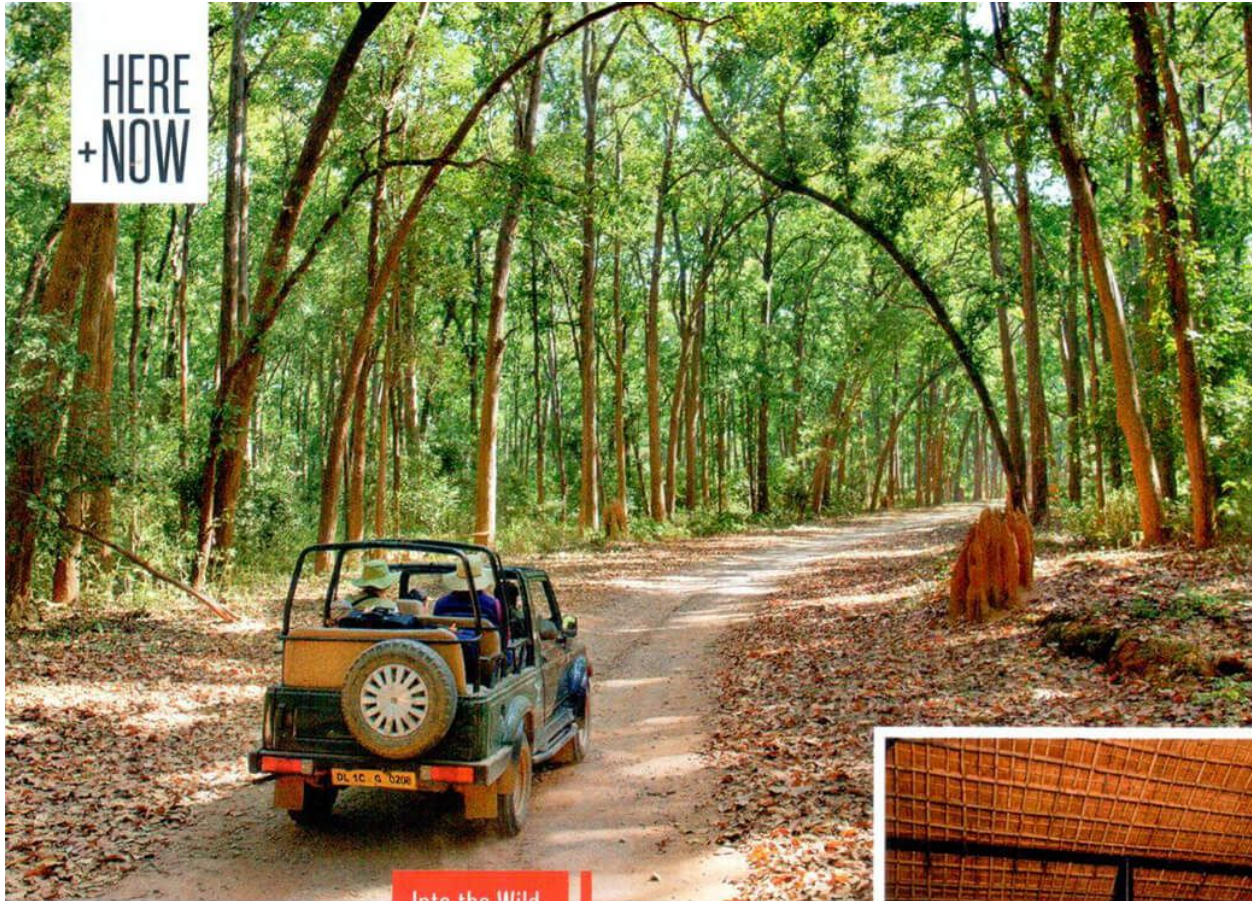


# 11 GREAT REASONS TO SEE THE WORLD NOW

BALI • ODISHA • LONDON • FINLAND • MONTANA • VENICE • ROME • SIKKIM • ANTARCTICA • PARIS • UTAH

UNPLUGGED MARKUS ZUSAK | JOHN ISAAC | JERRY PINTO

HERE  
+ NOW



From above:  
A tourist jeep in  
the Jim Corbett  
National Park;  
a dining area  
at Jim's Jungle  
Retreat overlooking  
the forest.

Into the Wild

## Chase of the Big Cat

As the monsoons leave behind a rejoicing jungle, we head to Jim's Jungle Retreat on the edge of Corbett National Park for a spot of adventure.



It is the tiger that brings people to the Jim Corbett National Park. Everything about the big cat fascinates wildlife enthusiasts, even the paw marks that are often the only evidence of its presence. At Dhela's Jim's Jungle Retreat, the champion is the jungle—it's residents follow closely. The 16-acre property is at the periphery of the forest. With just 18 jungle cottages and Raj-style rest houses, it offers exclusivity to its guests and the natural vegetation around gives one the impression of being in the wild. You can have a conversation with nature here, for all experiences focus on bringing you two closer—the lack of a television in rooms ensures that you listen to the sound of the jungle and watch monkeys on the trees.

### LIFE IN THE WILD

Sit in the wraparound veranda of your Jungle Lodge, ensconced in the



**JIM CORBETT IS HOME TO 215 TIGERS—THE MAXIMUM FOUND ANYWHERE IN INDIA. IT IS FOLLOWED BY BANDIPUR AND NAGARAHOLE RESERVES IN KARNATAKA WITH 120 AND 101 TIGERS RESPECTIVELY.**

trees, and take in the panoramic views of the wilderness around. The lodges take inspiration from the era of the Raj and photographs of hunting adorn the walls. Little touches like an owl-shaped lock and the cuckoo-shaped knocking handle on the main entrance are inviting.

Head to the mud-and-thatch dining hall and try Kumaoni dishes; the retreat also hosts bonfire barbeque nights. Take time out for yourself: read a book in the library, go for a swim, indulge in an Ayurvedic massage, or watch a film on wildlife conservation.

### A SPOT OF ADVENTURE

The Jeep Safari is a must. You can choose between a full-day trip or a shorter four-hour excursion into the dense jungle. Apart from that, the resort also offers walking tours of the jungle, heritage walks with locals, and cycling tours to nearby villages. [jimsjungleretreat.com](http://jimsjungleretreat.com)

### QUICK GUIDE

**HOW TO REACH**  
Dehradun (180 kms) and New Delhi (230 kms) are the nearest airports.

**BEST TIME TO VISIT**  
November to mid-May.

**SPOT** Royal Bengal tiger, elephant, leopards, Himalayan black bear, Indian pangolins, golden jackal, different species of deer, and crocodiles.

**DO** Take a walk in the kitchen garden that has a variety of plants, vegetables, and herbs of medicinal value. The retreat works with the local forest department and encourages guests to take back home indigenous plants to preserve native biodiversity.